



Congregation B'nai Moshe **Bulletin**

Volume 46, No. 4 — November 2011 — Cheshvan/ Kislev 5772

ISRAELI ART COMES TO METROPOLITAN DETROIT



at Congregation B'nai Moshe
Open to the Community

An Exhibition and Sale

Featuring 1500 works of art by over 100 Israeli artists
Including original oil paintings, watercolors, lithographs and etchings
from the Safrai Art Gallery, Jerusalem, Israel

Preview Night: Thursday, November 17, 7 p.m. - 10:30 p.m.

Hot and Cold Hors D'oeuvres, Champagne, Sweet Table, Coffee, Tea

\$150 - Patron — Includes \$25 voucher towards purchase of an item \$200 or more plus 5 raffle tickets

\$100 - Sponsor
2 raffle tickets

\$36 - Donor
1 raffle ticket

Friday, November 18, 9 a.m. - 2 p.m.
Donation \$18 - 1 raffle ticket

Saturday, November 19, 7 p.m. - 11 p.m.
Wine, Cheese, Coffee, Tea, Sweet Table

Those who attend Thursday night may attend Saturday at no charge

Sunday, November 20, 10 a.m. - 4 p.m.

5 drawings for signed and numbered lithograph or one of four Israeli art posters

Additional raffle tickets: \$5 each or 5 tickets for \$20 You do not need to be present for drawing.

For reservations, call 248.788.0600



Veteran's Day Brunch... see page 8

Sisterhood Gift Bazaar...see page 6

HOW YOU CAN REACH US

Telephone: (248) 788-0600

Fax: (248) 788-0604

School office: (248) 788-3600

email: cbminfo@bnaimoshe.org

on the web: www.bnaimoshe.org

Clergy

Rabbi Elliot Pachter... rabepach@bnaimoshe.org

Cantor Earl G. Berris... cantorb@bnaimoshe.org

Executive Director

Charles Berris cbminfo@bnaimoshe.org

Director of Education

Gail Gales cbmedu@bnaimoshe.org

Office cbmoffice@bnaimoshe.org

bnaimoshe@bnaimoshe.org

President Dan Sperling

dansperlingcbm@gmail.com

Vice Presidents Steve Fine

Steve Mondrow

Treasurer Joel Shayne

Secretary Cathleen Zepelin

(USPS 981-880) Published Monthly except July

POSTMASTER:

Send Address Changes to:

B'nai Moshe Bulletin

6800 Drake Road

West Bloomfield, MI 48322

Periodical Postage

Paid at Pontiac, MI 48343

December Bulletin Deadline

December *Bulletin* articles are due in the office on Thursday, November 3, 2011. Stories may be delivered to the office, faxed to (248)788-0604, or e-mailed to cbminfo@bnaimoshe.org. Photographs are encouraged to accompany stories when appropriate. Late stories are subject to inclusion on a case-by-case basis.

HAVE YOU VISITED OUR WEBSITE?

www.bnaimoshe.org

We Have Archived Bulletins

Thoughts From Our President

by Dan Sperling



One of the things that I didn't realize came with the job of President is the role of official "complaint taker." I've come to learn over the past few months, though, that this is actually a critical part of the job. Although I'm no Harry S. Truman, I can't help but have a "Buck Stops Here" feeling when it comes to the operation of our Shul.

So... please keep it up! Be sure to email me or catch me during Shabbat Kiddush to share with me your observations, questions, or concerns about our synagogue. With my busy schedule, I am not at B'nai Moshe nearly as much as many others. There's a lot that goes on that I don't see, and so I greatly appreciate many of you being my eyes and ears!

However, listening to all the constructive feedback made me realize that I don't hear or say "thank you" enough for all the things that DO go well around B'nai Moshe. The interesting thing is I see this more places than just at B'nai Moshe. I'm experiencing this same thing more and more in my daily work life. I can't tell you how many work emails I get that sound more like commands than communications. "Solve that problem and bring me an answer by tomorrow!" No please... no thank you... just do it. I actually have "thank you" as part of my email signature so nothing goes out without me thanking the recipient. Sometimes I actually add an "!" after the thank you to express that I am really appreciative. Corny, huh? But, it works.

But, back to B'nai Moshe. I thought this would be a nice opportunity (especially on the heels of the High Holidays) to voice some thank yous on behalf of myself, the Board of Directors, and the entire congregation:

Thank you to Chuck Berris, Cantor Berris, and the entire choir for working so hard for so long to help us pray during this year's high holidays! Thank you also to the chairs of both the summer picnic and the membership outreach event. (I'm not going to try and list everyone because I'll be guaranteed to miss many people.) Both events were well attended and it was great fun for both our current and potential members... and thank you to the Fishers for your great support of the outreach event as well! Thank you to the Sisterhood for feeding us with Kiddush after each Shabbat (not to mention the break fast). And thank you to Chuck and the office volunteers and staff for getting so much done in the weeks leading up to the holidays and for everything you do to keep our small, "family business" up and running! Finally, thank you to everyone else I've missed for the things you do (whether large or small) to make our congregation better for us and for the community!

Now, I'd like to close this month's column with a very special THANK YOU... one that I can't shout loud enough. The reason is that this particular thank you goes to someone that you cannot thank yourselves, since the recipient wishes to remain anonymous. You see... earlier this year, we had a donor make a significant gift to our Shul. In fact, it was one of the largest single gifts received in recent years. They requested that it be spent to help promote our congregation and expand our membership. It's already been used to advertise our \$180 new member promotion, help support our summer membership events, and underwrite our free Shabbat kindergarten program.

We are blessed to have members such as this feel who so connected to our Shul. I only wish each and every member could personally thank this person for their passion for B'nai Moshe and for their generosity. So, on everyone's behalf, I close with a big THANK YOU!

See you in Shul!...

A Word From Our Rabbi

by Rabbi Elliot Pachter



What Do We Pray For?*

My colleague Rabbi Ed Feinstein, in his book *Capturing the Moon*, tells the story of Rabbi Pinchas, a beloved leader of his community, who is sought out constantly by people who have problems and/or questions. Rather than spend his days talking to people, what Rabbi Pinchas really wants is to sit alone and write a book.

One Yom Kippur, God grants Rabbi Pinchas' fervent prayer to be alone, and immediately the rabbi starts working on that book he always dreamed of one. No one disturbs Rabbi Pinchas with a question, but also no one invited him to break the Yom Kippur fast, help him build his sukkah, nor visit Rabbi Pinchas in his sukkah.

Rabbi Pinchas comes to learn that his lifelong prayer — to be alone — is not really what he wants. In the end, he prefers a life with people, even if that means never being the author of a book.

Like Rabbi Pinchas, many of us pray for something which, though it seems attractive at the time, really won't improve the quality of our lives. And we pray for our lives to be different, not realizing that what we have is usually worth keeping and cherishing.

In the movie *Big*, Tom Hanks is a young boy wishing to be older. In *The Wizard of Oz*, Judy Garland wants to leave home to live on the other side of the rainbow. In both cases, as in other similar movies, the characters' wishes are granted, yet they discover that returning to their old lives is the greatest blessing of all.

Even people living in difficult situations — unemployment, illness, etc. — have discovered that their lives have deep meaning, and that their particular challenges are as helpful as they are detrimental. People living in poverty or physical pain have shared stories of how much joy they experience and how much more appreciative they are of life. They are overwhelmed by the compassion and assistance of members of their communities.

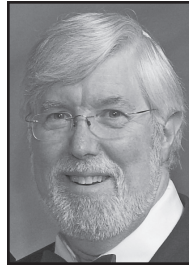
This phenomenon was explained two thousand years ago by Rabbi Yochanan in the collection of midrashim called *Yalkut Shimoni*. Rabbi Yochanan makes an instructive observation about the human anatomy. The eye has a white part and a dark part, yet we see only out of the dark part. Rabbi Yochanan further analogizes that while standing in a dark place, a person can see people in a nearby lit area, but the opposite is not true. The message here is that living in "darkness" (i.e. pain of many sorts) enables one to have a greater insight into the meaning of life.

It would be nice for all of us to be healthy, rich and powerful. But what we truly need to ask of God is the insight to see ourselves as we truly are — to recognize our strengths, build upon them, and use them to help others not so blessed. And to recognize our flaws, and to discover ways to improve in those areas, both by our own efforts, and by learning to ask members of our community for assistance.

*Adapted from my Kol Nidre 5772 sermon.

A Word From Our Cantor

by Cantor Earl G. Berris



Tour to Israel October 21 – 31, 2012

In one year, Ilana and I will lead a second group from the synagogue on a tour of Israel. Three years ago, we went with 30 members of B'nai Moshe on a wonderful trip to our ancient land, doing "Travel the Bible." Next year we will go do a trip through the eyes of the early pioneers and the refugees from Europe to build a new Jewish State of Israel. I am working with Ayelet Tours, the agency that helped me prepare the last trip.

In December we will have all the prices and the final itinerary and plans ready to distribute. I hope those who have been to Israel before, either with Ilana and me the last time or on some other group tour will give our next trip to Israel a try. Those who have been on any of the various group trips that I have led, know how great it is to vacation with your B'nai Moshe family.

Below are some of the interesting activities and stops planned. If you have any questions, please do not hesitate to ask Ilana or me.

Arrive in Israel. ... Our first stop is **Independence Hall**, site of the 1948 signing of Israel's Declaration of Independence ... Continue to the **Palmach Museum**, where we "join up" with the paramilitary forces from Israel's pre-Statehood days.

This morning we participate in a co-existence tour with an Arab and a Jewish guide through the neighborhoods of **Old Jaffa** ... Continue to **Zichron Yaakov** tour the beautiful boutique stores...Continue on the artist village of **Ein Hod** ... Continue on to **Haifa**...Stop atop **Mt. Carmel** to see the panoramic views of the port city of Haifa, and admire the beautiful Bahai Temple and Persian Gardens and learn about the Bahai Religion.

How about a visit to **Akko**, where we will explore the Crusader-era fortifications and British Prison as we learn about this historically important port ... We will tour the amazing **Tunisian Mosaic synagogue**.

Let's go to **Tel Dan** for a short hike at this northern source of the River Jordan and lunch at **Dag al Hadan**. Next an exciting Jeep tour up to the **Golan Heights** and stop at the **DeKarina chocolate factory** at Ein Zivan for a fun and delicious stop! This is just the beginning of a fantastic vacation and learning experience. For those who want, there will be an optional add on to visit Elat and the Rose city of Petra, Jordan.

Look for lots of information in future bulletins flyers and announcements.

As we say at the end of Yom Kippur and Pesach – Next year in the rebuilt city of Jerusalem. The Memories Last Forever!



Bat Mitzvah

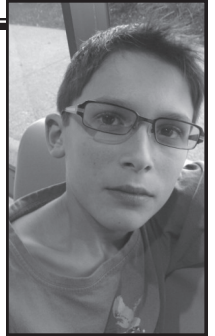
~~~~~  
*Amy Benson*

Amy Benson will be called to the Torah as a Bat Mitzvah on Saturday,

November 5, 2011. Amy is the daughter of Sue and Randy Benson and sister of Aaron. She is the granddaughter of Joan Braun and the late Charles Braun and the late Barbara and Irwin Benson.

Amy is a seventh grade student at West Hills Middle School in Bloomfield Hills. She loves tennis, volleyball, Camp Tanuga, all pets and hanging out with her friends.

Amy has been volunteering with a foster care home for Skipperkes (a breed of dog) helping the family care for foster dogs for her mitzvah project.



*Bar Mitzvah*

~~~~~  
Max Greenbaum

Max Greenbaum will be called to the Torah as a Bar Mitzvah on Saturday, November 26, 2011.

Max is the son of Susan and Adam Greenbaum and brother of Gillian, Louis and Victoria. He is the grandson of Sunny and Morty Silver and Arline Greenbaum and the late Sammy Greenbaum.

Max is an 8th grade student at Dunckel Middle School where he is a WEB leader. He likes to swim, play video games and the trumpet, read and hang out with family and friends.

Max and his family continue to support the Ronald McDonald house by collecting pop-tops and providing meals.

CONGREGATION B'NAI MOSHE MEN'S CLUB

**2011/5772 CHANUKAH
MENORAH MAKING CONTEST**



PRIZES AWARDED IN CATEGORIES:

K-3RD GRADE* *4TH-6TH GRADE* *7TH-12TH GRADE* *FAMILY

**MENORAHS ARE DUE IN THE SYNAGOGUE OFFICE BY NOON,
DEC. 5 AND WILL DISPLAYED IN THE LOBBY UNTIL DEC. 18.**

WINNERS WILL BE ANNOUNCED SHABBAT MORNING, DEC. 10.

**Entrant must be a B'nai Moshe member or a child
or relative of a member, or a L.I.F.E. student.**

THE RULES:

- 1. Be creative. Get ideas from books in the library and from the internet.**
- 2. Menorahs must hold 9 lights or candles, one set apart as the shamesh.**
- 3. Menorahs may be made of any material.**
- 4. DO NOT put your name on menorah. We will give each an ID tag for judging.**
- 5. Have fun!**

Questions? Contact Kerry Greenhut: KLG6675@SBCGLOBAL.NET or (248) 669-1958.

RECALLING REMBRANDT'S JEWISH CONNECTIONS

This month a major art exhibit is opening at the Detroit Institute of Art. Entitled **Rembrandt and the Face of Jesus**, the exhibit first opened at the Louvre in Paris; then it was brought to the United States to be shown at the Philadelphia Museum of Art, and soon at the DIA here in Detroit. The nature of the relationship between Rembrandt and the Jews of Amsterdam has long been debated. A review of the exhibit found in Tablet Magazine www.tabletmag.com (a new online magazine focusing on Jewish life) explains:

"Like so many other aspects of his life and work, Rembrandt's connection to the Jews has been sentimentalized, overestimated, misappropriated, criticized, dissected—and debunked. In recent years, the image of the artist as a philo-Semite who painted and socialized with his Jewish neighbors has become a topic of intense scholarly debate. Yet the notion that there's something crypto-Jewish about Rembrandt continues to enthrall.

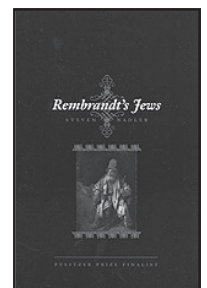
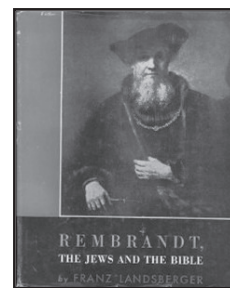
But maybe the Jews in Rembrandt's art are hidden in plain sight, clearly visible in depictions of his favorite Jewish protagonist of all. That's the thesis of "Rembrandt and the Face of Jesus," a provocative exhibit which debuted at the Louvre last year and will be... traveling to Detroit in November. In the catalog, curator Lloyd DeWitt suggests that the model for a series of seven heads of Christ—studies DeWitt believes Rembrandt used for several major religious paintings—was a Jew."

In October, the Jewish Federation of Metropolitan Detroit, in cooperation with the DIA, began a three-part lecture series about Rembrandt and the Jews exploring Jewish history in Amsterdam, and Rembrandt's attitudes towards Jews and Judaism as seen in his paintings. Part three of this series, discussing the actual exhibit, will be held later this month to coincide with the opening of the show. Sadly, as I write this article, the lecture series is already overbooked and so as you read this article, it is too late to attend them.

But it is not too late to learn about the Rembrandt/Jewish relationship. The B'nai Moshe Library has two books on the subject. The first is an older book called **Rembrandt, the Jews and the Bible** by Franz Landsberger. This book was published by the Jewish Publication Society in 1962. The second is titled **Rembrandt's Jews** by Steven Nadler, published by the University of Chicago Press in 2003. Both these books can be found in the library's art collection.

The library strives to provide a wide range of subject material beyond Jewish religious belief and practice, including books about the "Arts" such as music, dance, film and art as they pertain to Jewish life. So come into the library and look around to see the variety of materials that can be found there.

And please remember to select the S Wasserman Library Fund when making a donation to the synagogue. Your donations make it possible for the library to continue to provide new materials on a wide variety of Jewish topics so there can continue to be something of interest for each of us in the library.

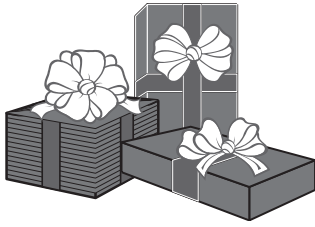


SAVE THE DATE: BOOK SWAP RETURNS
Join us on Shabbat morning, December 10 for our semi-annual Congregation B'nai Moshe Sisterhood Book Swap.

Book collection will begin on Monday, November 28 and continue through Thursday, December 8.

Contact Susan Greenbaum at (248) 788-3236 or Susan Brohman at (248) 818-0217 for details





Sisterhood Gift Bazaar Sunday, December 11 10 a.m. to 4 p.m.



Mark your calendar now. This will be a great opportunity to do your shopping for Chanukah and all of your gift giving occasions. You will find items for everyone on your gift list including your pets.

The bazaar will feature gifts from unique vendors.

If you would like to help with the Bazaar, please contact Linda Mondrow at LMondrow@aol.com

Condolences

With sadness we announce the passing of our member, **Jacqueline Rogers**. We extend our condolences to her son and our member, Don (Keri Guten) Cohen, to her daughter Sandra Sherman, and to her sister Eleanor Marx.

We extend our condolences to our member, Beth (Michael) Rosenfeld on the passing of her mother, **Florence Schwartz**. We also extend our condolences to her husband, Maxwell Schwartz, her son, Michael (Carol Ann) Schwartz, and to her grandchildren.

We extend our condolences to our member, Anita (Jack) Lampcov, on the passing of her sister, **Geraldine Spilkevitz**. We also extend our condolences to her husband, Stuart Spilkevitz; her daughters Sharon (Ron) Landau and Leslie (David) Doran; and to the rest of her family.

We extend our condolences to our members Norma Stoller and Elaine (Kerry) on the passing of their sister-in-law and aunt, **Florence Greenstein**.

With sadness we announce the passing of our long time member, **Mildred Kornheiser**. We extend our condolences to her husband, Dr. Jerome Kornheiser, her children, Dr. Kenneth (Vicki Simmons-Kornheiser) Kornheiser and Gwen Silverstein, grandchildren, Karee (Mike) Strome and Stacey (Fred) Lusky, her great grandchildren, sister, Gladys "Gaby" Davis, and her sister-in-law Rhoda (Ralph) Shapiro.

THANK YOU FOR YOUR SUPPORT

I would like to thank all B'nai Moshe members who responded to the Annual Campaign. Your tzedakah is *extremely important* to maintaining all of the religious, educational, social, and support programs that we know you need and want - both today and into our second century.

It is not too late to send in your pledge card. In case you mislaid your card or did not receive one, you can still call or e-mail the synagogue office to make a pledge. Our goal is to achieve 100 percent member participation in the campaign this year, so volunteers will call members who we haven't heard from.

If you receive a phone call, please be prepared to tell the volunteer the maximum amount you are comfortable pledging. Every dollar is important.

Remember - these contributions are tax-deductible if you itemize and they can be paid off during the course of the next eight months.

Thanks, again.

Kerry Greenhut, Annual Campaign Chair

Check Out Our Lost & Found

Missing something? You might find it in the B'nai Moshe Lost & Found. Currently there are a number items waiting for their owners to claim them, including eyeglass cases, hats, jewelry and even a small purse.

For details, call the office, 248.788.0600.

Welcome To Our Open Kitchen

Plan your next Simcha in our beautiful Social Hall or Chapel.

You can select your own Kosher caterer from among those found on the Vaad Detroit website: cordetroit.com/kashrus/retail-establishments.

Our synagogue is available during the day or evenings to host events.

So please contact the office to make your reservations, 248.788.0600.



Thank You To Torah Fund Contributors

Reminder: It's never too late to become a Torah Fund contributor! Pledges in the denominations of \$180, \$300 or \$600 for the new year are still being accepted. Your pin should arrive within a week. Call Sharon Silverman at 248.666.8170 or e-mail her at sharon125@att.net.

We are pleased to thank the following women, who have made pledges since September: Jacqueline Goldstein, Susann Kauffman, Ruth Rosenfeld and Michele Siegal.

In addition, the following contributions have been made to Torah Fund:

In Memory of Eugene Rottman

By Sharon and Stewart Silverman, Lillian Greenhut

In Memory of Thelma Rottman

By Lillian Greenhut

In Memory of Seymour Subar's Sister

By Sharon Silverman and Stewart Silverman

In Memory Judy Biesman

By Sue Himelhoch

In Memory of Shirley Behrendt

By Sue Himelhoch

In Memory of Doris Bombel

By Sue Himelhoch

In Memory of Herman Fox

By Sharon and Stewart Silverman

In Memory of Helen Siegel's brother

By Lillian Greenhut

In Memory of Geri Spilkevitz

By Jennifer and Mitchell Bass, Sue Himelhoch, Ruth Rosenfeld

Get Well to Dr. Naomi Weckstein

By Sharon and Stewart Silverman

Get Well to Alan Rebenstock

By Jennifer and Mitchell Bass, Ruth Rosenfeld

Mazel Tov on the birth of Sandra Shapiro's granddaughter

By Sharon and Stewart Silverman



Receive the 5772 pin as our gift to you in recognition of your generous support.

Welcome to Our New Members

Lavie Golenberg

Beverly and William Leuchter

Freda Weberman

Michelle and Michael Goldapper,

Alexis, Sophie and Sasha

Sisterhood Kiddush Fund Donations

Thank you to the following who recently donated to the Sisterhood Kiddush Fund:

Lillian Greenhut

Camille McMillan

Cathleen Zepelin

Annette & Barry Kaufman

Pearlena Bodzin

Ethel Feldman

Rene Petrinitz

Magdalene & Marcel Thirman

Marilyn & Mel Borin

Kerry Greenhut, in honor of Lillian Greenhut's 90th birthday

Sharon & Stewart Silverman, in memory of Anita Lampcov's sister.

If you'd like to contribute, please send a check to Sisterhood of Congregation B'nai Moshe and mark "Kiddush Fund" in the memo. Are you celebrating a special birthday, marking a milestone anniversary or another family simcha? Why not consider sponsoring or co-sponsoring a Kiddush? For details about sponsoring a Kiddush, please contact Jennifer Bass, (248) 227-6333.

B'nai Moshe Men's Club Veteran's Day Brunch Honoring Our Veterans

Sunday, November 13 at 10 a.m.

The Men's Club will again host its annual Veteran's Day brunch to honor the military veterans of our synagogue. Join us for a special morning service at 9 a.m. followed by a super brunch at 10 a.m.

After brunch, we will hear Guy Stern speak about the "Ritchie Boys." The "Ritchie Boys" were U.S. soldiers who were Jews from Germany and did intelligence work, interrogations, and broadcasting for the U.S. Army during WWII.

Guy is the curator of the "Ritchie Boys" exhibit at the Holocaust Memorial Center on Orchard Lake Road in Farmington Hills. Guy, who emigrated from Germany to the USA in 1937, was a soldier at Normandy.



For information, please contact Sid Kraizman at (248) 921-0687 or sidkraizman@sbcglobal.net

Veteran's brunch reservation deadline: Nov. 8.

Reservation Name: _____
 _____ B'nai Moshe Veterans and/or Widows of Veterans (no charge)
 _____ Adults @ \$10 Total \$ _____
 _____ Children (4-12 yrs) @ \$ 5 Total \$ _____
 Donations for _____ "Jewish Military Spiritual Kits" @ \$10 each Total \$ _____
 Total Attending _____ Total \$ _____

(Please enclose check - No credit cards)

Veteran's Information (even if you are unable to attend, please send us your service information so that we can include your name in our program)

Name _____ Rank: _____
 Period of Service: _____ Branch of Service: _____ If not U.S., specify country _____
 Where Posted: _____ Can you attend the brunch? _____

If you have not submitted a photo for our B'nai Moshe Veterans' Display, then please send in a nonreturnable copy of your photo.

SEND TO: MEN'S CLUB OF CONGREGATION B'NAI MOSHE, 6800 DRAKE RD, WEST BLOOMFIELD MI 48322

DSO AT THE BERMAN CENTER

(JEWISH COMMUNITY CENTER AUDITORIUM)

CONDUCTOR: LEONARD SLATKIN: MOZART: OVERTURE TO MARRIAGE OF FIGARO/
 COPLAND: APPALACHIAN SPRING/ BRAHMS: SERENADE NO. 1

DATE: JANUARY 5, 2012

TIME: 7:30 P.M.

PRICE: \$20 (\$21 NON B'NAI MOSHE MEMBERS)

RESPONSE DEADLINE: NOVEMBER 6



TEAR HERE

NAME _____ E-MAIL _____ PHONE _____

NUMBER OF TICKETS CBM MEMBERS # _____ @ \$20 \$ _____
 NON-MEMBERS # _____ @ \$21 \$ _____

TOTAL ENCLOSED \$ _____

(CHECKS ONLY PAYABLE TO CONGREGATION B'NAI MOSHE, 6800 DRAKE RD, W BLOOMFIELD MI 48322)

CHECK HERE IF YOU WOULD LIKE TO CAR POOL WITH SOMEONE FROM YOUR NEIGHBORHOOD []